

HOLIDAY HOMES, GUEST ROOMS ***
MOBILE HOMES AND SLEEP BARRELS

Welcome



Scan this QR code and find directly our homepage

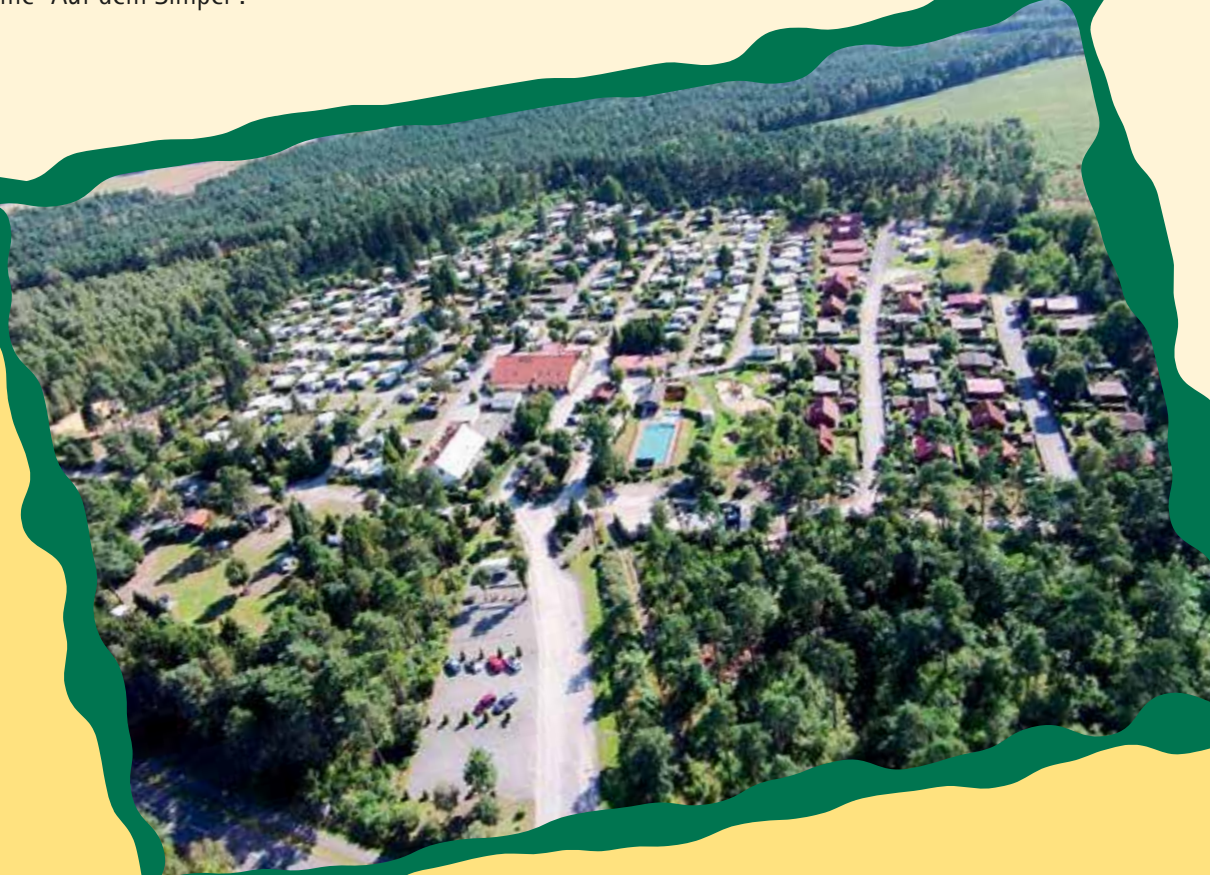
Our campsite ★★★★★

is a 3rd generation family-run business located in a serene surrounding. Our site, which has an overall size of 9 hectares, offers a variety of rental accommodations in addition to camping facilities.

"Auf dem Simpel" derives its name from a hill (81 metres above sea level), which on historical maps was called "simple" elevation. It is also where Willi and Lissy Marquardt set up a campsite in 1964 giving it the name "Auf dem Simpel".

The entire campsite team works together to make your stay as relaxing as possible. Because of our versatility, both families with children and people of any age will enjoy a pleasant and comfortable campsite experience.

Available at our reception desk are comprehensive and informative materials about destinations for an excursion and sights in the Lueneburgh Heath. We are happy to offer you assistance and advice!



Index

	Page
About us	2
Attractions in the region	3
Location Map	4
Our area	5
Camping	6
Guest rooms and sleep barrels	8
Mobile homes	9
Holiday homes	10
Holiday homes and mobile homes to buy	11
Events	12
Prices	14

Nature is very important to us...

...and camping is a natural holiday form!

Therefore it is obvious that we have been cooperating with the association for the promotion of environmental and nature conservation, safety and quality in the camping industry, also referred to as ECOCAMPING in short since 2005.

We supply electricity exclusively from renewable energies, use solar energy in all sanitary facilities, use rainwater for irrigation and work constantly to save important resources of our environment.

Therefore we decided, among other things, to make the showers subject to a charge for our campsite guests, not to make money, but to save important drinking water! The future of our planet Earth is in our hands ...

Parks and more nearby

- Heide Park Resort is an amusement park only 800 meters away from the campsite. Tickets with us
- Weltvogelpark Walsrode is an ornithological park. Tickets with us
- Serengeti-Park Hodenhagen provides nature and adventure expeditions. Tickets with us
- Magic Park Verden, a fairyland park, is ideal for our young guests.
- Wildpark Lüneburger Heide in Nindorf houses a local zoo.
- Ralf Schumachers Kart & Bowl in Bispingen (cart course and bowling from Ralf Schumacher)
- Snow Dome in Bispingen (skiing also in summer)
- Different high rope courses and climbing parks
- Greifvogel-Gehege Bispingen (birds of prey compound)
- Hundertwasserbahnhof in Uelzen (train station designed by Hundertwasser)
- alaris Schmetterlingspark (butterfly park)
- Wildpark Müden (zoo) Tickets with us
- Schiffshebewerk Scharnebek (ship hoist) (ships up to 100 meters of length can overcome 38 meters of difference in altitude)
- Panzermuseum Munster (tank museum)

- Iserhatsche Landschaftspark in Bispingen (landscape park)
- Universum Bremen (interactive exposition on sciences with plenty of opportunities to try out things)

Destinations for excursions

- Soltau Therme Tickets with us (A thermal bath featuring spa treatments, massages, brine baths, poultices, and much more.)
- Toy museum in Soltau (for young and old)
- Golfpark Soltau (Offering two options, there is a 9-hole golf course for beginners and 18-hole golf course for advanced players.)
- Heidewitzka (indoor playground)
- In the surrounding countryside there are various horse ranches for practice or riding out.
- felto - Filzwelten (This site is a showroom for historical felt production in Soltau.)
- Designer Outlet Soltau Coupons with us is the place to shop in Soltau

Experience nature

- The forest around the campsite is ideal for cycling tours and hiking.
- The city of Soltau can be reached via an idyllic path through the forest (approx. 4,5km).
- Go for hikes, cycling tours, or coach rides in the 1.130km² heathland areas of the nature reserve "Lueneburgh Heath". The "Wilseder Berg", 169 meters in height, registers as the highest elevation in the region. From its top you can see the unique heathland, and if you are lucky you might even see a shepherd with one of the eight flocks of sheep (Heidschnucken).
- Go for a walk on the quality hiking trail "Heidschnuckenweg" that leads past our campsite.
- 1000km of sign-posted cycling trails
- You can go for a ride through the nature reserve on the historical railcar "Anteater". (From July through September the train departs every Sunday from the railway station in Soltau.)
- The barefoot park, Egestorf, awakens happiness and curiosity by experiencing nature in a new way.
- From May through October, between Tuesday and Saturday you can experience the return of the "Schnucken" (local breed of sheep) from the pasture at the shepherds farm Neuenkirchen.
- Fishing with the sports fishing club in 1km distance from our site. (A fishing license is required) Tickets with us



- The Pietzmoor (moorland) has a very special appeal at any time of the year. Cross the moorland on wooden foot-bridges, and experience beautiful landscape settings including a great variety of animals.

Cult-cities of the region

- Hanseatic City of Lüneburg (An old salters' city with impressive half-timbered houses, and home of the ARD TV-series "Rote Rosen", a German TV-series shot in Lüneburg.)
- Old town Celle (This romantic town, which was preserved during the war, has half-timbered houses dating from the 16th, 17th and 18th centuries.)
- Hanseatic City of Hamburg (A city with many entertainment venues including harbour cruises Tickets with us, museums, a miniature park and musicals.)
- Hanseatic City of Bremen (Universum Bremen, Bremer Roland are located in this beautiful old town.)
- Hanover (The capital of the federal state of Niedersachsen (Lower Saxony) hosts the baroque garden "Royal Gardens of Herrenhausen" and an adventure zoo.)

Location Map



to BAB A7 and Heide Park Resort

800m to the Heide Park Resort (theme park)



Pictograms

- Dump station (waste water disposal)
- Chemical WC/Disposal for camper vans
- Bike rental
- Bike racks
- Mixed waste containers/ Waste containers
- Disposal of recovered paper and/or waste glass
- First aid kit
- Phone
- Information board
- Waste water, Chemical WC disposal
- Fire extinguisher
- WC for disabled persons
- Public drinking water collection point



WLAN availability all over the site

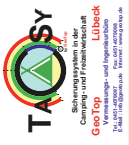
Pitch categories:

- Holiday tourist pitches (comfort pitches)
- All-year pitches and seasonal pitches
- DP117 = Double comfort pitches

Rental property:

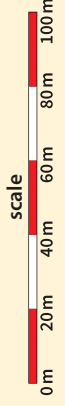
- SF1 - SF8 = Sleep Barrels
- M1 - M4 = Mobile Homes
- H24, H27, H32 = Holiday Homes
- Guest rooms in main building above restaurant

Presentation plan 2018



Heidschnuckenweg / Circular cycling route No.1

Heidschnuckenweg / Circular cycling route No.1
Fish ponds



CAMPINGPLATZ
AUF DEM SIMPEL
WALDAUF-DEUTSCHFELDE

to the train station
Wolterdingen 1km and Soltau

Our restaurant...

... is bright and nicely arranged in a Mediterranean style. Every morning we provide you with a rich breakfast buffet as well as a varied evening dinner menu. All the meals are freshly prepared. According to the time of the year we offer seasonal specialities such as matie (young herring), asparagus or green cabbage.

Our weekly barbecue evenings, beginning from Ascension Day on, are very popular. In July and August we also have live music playing throughout the evening. More information can be found in our programme section.

From March 16th to November 3rd the restaurant is open for you every day (from July 1st to September 2nd 2018 Tuesday is closing day).

From November 4th to end March 2019, the restaurant is only open on Fridays and Saturdays (from 25.12. - 30.12. it is open daily again).



Our Shop...

... offers you fresh bread rolls, croissants, baguette and other kinds of bread every morning. In addition you can buy everything for your daily needs in our shop. We have cold cuts, dairy products, barbecue meat and sausages, a small choice of fresh vegetables, toilet articles, drinks, sweets, canned food, souvenirs as well as replacement parts and camping equipment.



Sports and Games

- Outdoor swimming pool with a pool for babies
- The big children's playground will make every child happy
- Kick ground for football lovers
- Beach volleyball square
- Outdoor billiard
- Table soccer
- Outdoor table tennis
- Bike rental/ E-Bike rental
- Coach rides
(departure from the campsite is possible for groups)
- Go-Kart-rental & Go-Kart track



Our comfort pitches...

...measure between 100m² and 130m² and are surrounded by privacy hedges. We have a total of 110 comfort pitches for caravans, camper vans or tents. We also offer double comfort pitches for two caravans or motorhomes with a size of approx. 180m².

All comfort pitches are equipped with power (10A, CEE-outlet) and water connections as well as a sewage hook-up. Cable TV is partially available.



Our tent area...

...offers space for up to 30 tents, and is equipped with partially roofed seating space. It is located directly next to the sanitary facility number 3, where you will find washing up and cooking facilities as well as points for drinking water.

On request a suitable pitch is available for groups for up to 18 caravans or camper vans. It is equipped with power connections (10 A) only for CEE-plugs.

Parking lots are in front of the tent meadow.

The pitches in front of the barrier...

...serve as adequate spots for late arrivals. Power connection is available (6A, CEE-plug) for one overnight stay in your caravan or camper van in this area.

Toilet facilities, next to the tent area, are within 100 meters of the overnight camping pitches. Showers can be used for an extra charge. Overnight spots are only available for one overnight stay.



Our year round and winter pitches...

...are open all year round offering you an ideal place to retreat from your everyday life!

We have 110 year round and 30 winter pitches available. They measure up to 150m² and are equipped with power (10A, CEE-outlet), water connections as well as a sewage hook-up. Cable TV is available on request.



The campsite...

...has three sanitary facilities with wash and shower cubicles (partially accessible for handicapped people), toilets, washing machine and dryer rooms, 2 baby care rooms, 2 washing up and cooking facilities per wash house and a supply and disposal station for motorhomes.

Sale or exchange of grey 5kg and 11kg steel gas bottles as well as 11kg aluminium gas bottles is available at the reception desk.



Guest rooms ★★★

Our warm coloured guest rooms are comfortably equipped. Each has a separate bathroom with a shower and toilet. Each guest room is suitable for up to four guests. A spare bed for an additional person can be added on request.

All rooms are equipped with a double bed, flat screen TV, mini fridge (for your own beverages), towels, bed linen, radio alarm clock, hair dryer and mini safe. Our multiple bedrooms are equipped with a spare single bed or bunk bed.

As we do not have any single bedrooms, we offer our guest rooms only between November and March on single bed room conditions.

The rate per night in guest rooms includes WLAN, bed linen, towels, daily cleaning service as well as a bottle of water. The breakfast buffet in our restaurant can be booked separately for an extra charge.



Sleep barrels

Experience an unforgettable sleep adventure in our new sleep barrels!

The barrel measures 4 meters in length and 2,20 meters in diameter. Located in the rear part of the barrel is a 2,00 x 2,00 meters family bed. The front area is equipped with two benches that measure 1,75 meters. A pull-out table is found beneath the bed. It is possible to transform the two benches into two child's beds of 2,00 x 0,70 meters size.

Light and electrical outlets are available. An infrarot heater keeps you warm on cold days.

Outdoors seating space is available in front of the barrels. Showers, toilets, washing up and cooking facilities are only 20 meters away.



Mobile homes

Our modern cosy mobile homes are a more reasonable alternative to our cottages. They can be booked for up to 6 persons.

Our mobile homes have a living space of 32m² and a 15m² terrace that is partially roofed. They have two bedrooms (one bedroom with a double bed of 2,00 x 1,60 meters size and one bedroom with two single beds of 1,90 x 0,80 meters size each, that can also be out together). Included is one bed sofa (2,00 x 1,30 meters).

The open kitchen is equipped with a fridge-freezer combination, gas cooker, water kettle, coffee machine and toaster. Furthermore, you have a flat screen TV with integrated DVD player, USB and HDMI connection.

The mobile homes have a small bathroom with hair dryer and a separate toilet.

Bed linen, towels, utilities, WLAN and final cleaning are included in the rate.



Holiday homes ★★★

Our holiday homes are the ideal accommodation for longer stays in the Lueneburgh Heath.

Our holiday homes have a living space of 40 – 70m², a 10m² roofed terrace, 2 bedrooms and a surrounding yard area up to approximately 240m² size. They can be booked for up to 4 – 5 guests per holiday home. All holiday homes are equipped with a fully furnished kitchen (including an oven, dishwasher, toaster, coffee machine, water kettle), flatscreen-TV with integrated USB and HDMI connection, HiFi-stereo system and shower bath with hair dryer and toilet.

Bed linen, towels, utilities, WLAN and final cleaning are included in the rate.

View on house # 24



Holiday home # 24



Holiday home # 27



Holiday home # 32

Layout and sleeping possibilities vary from holiday home to holiday home.

- **Holiday home # 24** has a size of approx. 40m² (+10m² roofed terrace) and has an open bedroom studio with a double bed in the attic as well as a second bedroom on the ground floor with double bed.
- **Holiday home # 27** has a size of approx. 40m² (+ 10m² roofed terrace). This holiday home is at street level, and has a bedroom with double bed as well as a second bedroom with two single beds.
- **Holiday home # 32** has a size of approx. 70m² (+5m² roofed terrace). This holiday home is at street level, and has a bedroom with double bed as well as a second bedroom with a double and a single bed.

Holiday homes and mobile homes to buy

Areas marked with an "H" on our site plan are leaseholds for holiday and mobile homes. The majority of the already existing homes are private property, but there are also a few places for rent belonging to the campsite.

The following leaseholds are still available:
H29, H36, H38 and H44.



Due to our site construction plan the following framework conditions are binding:

- Possible size of the plot of land from 270 to 320m²
- Development with natural gas, water connection, sewage hook-up, electric power telephone and cable TV connection
- Uniform roof colours, outside walls or outside facades
- For plots of land bigger than 40m² a building permit is required
- Max. size of the building area is 70m² + 10m² roofed terrace
- Max. size of the floor area (ground floor + attic) 100m² + 10m² roofed terrace
- Max. size of the tool shed 15m³
- Ground plans for mobile and holiday homes can be chosen on an individual basis!

Holiday homes

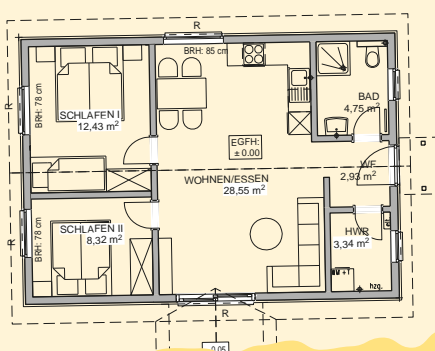
Solidly built and high-quality holiday homes are produced by local construction firms. The holiday homes are characterised by the following criteria:

- Wooden-frame houses are built on a solid concrete slab incl. foundation. The houses are pre-assembled in the factory and built onsite within two days.
- The following works, such as tiling, electricity and sanitary installations, are finalised within three months of house completion.
- The period between permission and turnkey delivery is approx. six months.
- Prices start from 95.000,- € and include development, arrangement of the outside facilities and a tool shed.

Mobile homes

The mobile homes are manufactured by the Dutch company Arcabo and are, contrary to our mobile homes for rent, concipated for year-round use and of higher quality.

- Mobile homes are installed on a carriage, which serves for loading and unloading on and off the truck only.
- Onsite they will be built on a minimum of 8 firm foundations.
- As a turnkey operation, Arcabo will deliver equipped and furnished mobile homes from the Netherlands
- The period between permission and turnkey delivery is approx. three to four months.
- Prices start from 63.000,- € and include transport, development, arrangement of the outside facilities and a tool shed.



example
Floor Plans



Program for Easter Weekend

Traditional Barbecue on Good Friday	30.03.2018
Air rifle competition with prizes – fun for all ages from 3pm – 6pm	30.03.2018
Easter bonfire in Wolterdingen (approx. 15 min walk) with Easter Egg Hunt on the way	31.03.2018
Easter Egg Hunt with our Easter Bunnies	01.04.2018
Lunch in our <i>RESTAURANT „AUF DEM SIMPEL“</i>	01.04.2018

Weekend Program for Ascension Day

Father's Day Barbecue (BBQ) from 11am onwards	10.05.2018
Live Music from Claudius Voelker in our <i>RESTAURANT „AUF DEM SIMPEL“</i>	11.05.2018
Flea market	12.05.2018

Program for Whitsun Weekend

Live Music from Klaus Winter in our <i>RESTAURANT „AUF DEM SIMPEL“</i> (with BBQ evening)	18.05.2018
Air rifle competition with prizes – fun for all ages from 3pm – 6pm	19.05.2018
Lunch in our <i>RESTAURANT „AUF DEM SIMPEL“</i>	20.05.2018

Program for Christmas Holidays

Tasty Christmas menu options in our <i>RESTAURANT „AUF DEM SIMPEL“</i>	25.12. + 26.12.2018
New Year's Party	31.12.2018
Traditional "kale feast" in our restaurant "Auf dem Simpel" from 12.30pm – 3pm	01.01.2019

Further programme items were not yet known at the time of printing,
but will be announced on time!

Our events throughout the season

BBQ evening in „Charis Grill-Eck“	every Fri.	18.05. – 07.09.2018
Summer festival celebration in a party tent for young and old		23.06.2018

FUN FOR KIDS

Kids crafts, rallies, tournaments, games and much more	every Thu.	July – August
--------------------------------------------------------	------------	---------------

Every Friday, from 06.07 – 07.09.2018, BBQ Evenings & Live Music		
- Stephan Friedrichs		06.07.2018
- Chris Blevins		13.07.2018
- Mike O'Neill		20.07.2018
- Johannes „Hans“ Albers		27.07.2018
- Stephan Friedrichs		03.08.2018
- Chris Blevins		10.08.2018
- Klaus Winter		17.08.2018
- Mike O'Neill		24.08.2018
- Chris Blevins		31.08.2018
- Dixi Stompers		07.09.2018
Air rifle competition with prizes – fun for all ages from 3pm – 6pm	07.07. + 21.07. + 04.08.2018	
Campsite rally with vintage cars for British vehicles with a joint overland tour		14.09. – 16.09.2018
End of the season barbecue BBQ with live music from Claudius Voelker		13.10.2018

Events in Soltau and the surrounding area

Weekly market in Soltau	every Wen. and Sat.	year-round
Free guided tour through the landscape park Breidingsgarten in Soltau	every 2nd Sun.	year-round
Guided tour through Soltau with a night watchman, the slightly different guided city tour	every Tue., Thu. & Fri.	May - October
Traditional baking day in the Heath Museum in Walsrode	every Thu.	May - October
City tour in Soltau (led by toys that have "runaway" from the Toy Museum)	every 1st Sat.	May - October
Guided tour in Neuenkirchen: Art, Nature and Landscape	every 1st Sun. from 11am	May - October
Return of the "Schnucken" (local sheep) from pastoral grazing in Neuenkirchen	Tue. until Sat. from 5:30pm	Juni - October
Thermal Bath-Live with live music in the Soltau Thermal Baths	every Mon.	18.06. - 27.08.2018
Music on Wednesday evenings at the town hall in Schneverdingen	every Wen.	20.06. - 22.08.2018
Ride on the historic "Anteater" railcar, departing from the Soltau train station	every Sun.	22.07. - 09.09.2018
Opening of the Heide Park Resort (theme park)		24.03.2018
Spring market in Soltau with Sunday shopping sale		27.04. - 29.04.2018
"Day of the bread and ham" in Soltau and Woltem		01.05.2018
Sheep shearing from 10am onwards at the sheep pen in Neuenkirchen		10.05.2018
"Shepherds evening" Schneverdingen	18.05. + 15.06. + 06.07. + 20.07. + 10.08. + 17.08. + 07.09. + 21.09. + 05.10.2018	
Anniversary celebrations on the Muehlenhof (mill farm) in Sprengel		21.05.2018
Spring market in Schneverdingen		25.05. - 27.05.2018
Farmers market at the Theeshof		02.06.2018
"Sheep shearing day" in Schneverdingen Beuße		03.06.2018
50 years Life Aid - a party for everyone in the city center of Soltau		09.06.2018
Bargain market in Soltau (Sunday shopping sale)		24.06.2018
Schützenfest (marksmen's festival) in Soltau		05.07. - 08.07.2018
Blues, Roots and Song Festival in Schneverdingen		14.07.2018
"Baking oven festival" in the landscape park in Breidingsgarten in Soltau	14.07. + 15.07. + 11.08. + 12.08.2018	
Cultural days in the Böhmepark "Zwischenspiel - das Zelt"		24.07. - 28.07.2018
Bread and dripping evening at the Theeshof in Schneverdingen		03.08.2018
Brunausee Festival in Bispingen		04.08. - 05.08.2018
Annual Beach Festival in Dorfmark		10.08.2018
Rock and pop music event in		17.08.2018
Festival for children in Böhme - Family theme park in Soltau		19.08.2018
Mill Festival at the Sprengeler Mill, Neuenkirchen		19.08.2018
Heath Blossom Festival in Schneverdingen		23.08. - 26.08.2018
Festival of Lights in the Böhmepark in Soltau		01.09.2018
District Marksmen's Fair in Bispingen		02.09.2018
Traditional "Shepherds day" in Schneverdingen		02.09.2018
Annual Potato Festival at the Schroeers Hof from 11am onwards		16.09.2018
Honey Festival in Wietzendorf		29.09. - 30.09.2018
Halloween Nights at the Heide Park Resort (theme park) - Open until 10pm!		October 2018
The Salters' Mauritius Festival in Soltau		02.10. - 03.10.2018
Farmers market in Soltau		12.10. - 14.10.2018
Christmas market in Soltau		29.11. - 02.12.2018
Christmas market in Schneverdingen		07.12. - 09.12.2018

Prices

High Season

23.03. - 08.04. / 09.05. - 23.05. / 29.06. - 02.09. / 28.09. - 21.10.

Off Season

01.01. - 23.03. / 08.04. - 09.05. / 23.05. - 29.06. / 02.09. - 28.09. / 21.10. - 31.12.

5-Star campsite - Prices are quoted per night.

Comfort pitch for caravans, camper vans or tents from 23.03. - 08.04.	12,00 € *
Extra tent for children at comfort pitch (max. 2 x 2 meters)	only 10,50 € *
Tent at tent area up to 9 m ²	3,00 € *
Tent at tent area up to 20 m ²	7,50 € *
Tent at tent area up to 30 m ²	9,00 € *
	10,50 € *

Additional adult	8,50 € *
Additional child (4 - 13 years)	4,50 € *
Additional child (0 - 3 years)	free
Additional Dog	2,00 € *

Electricity flat rate between July 1st and September 3rd	2,20 €
Otherwise price per kWh	0,60 €
Shower per minute (to the second billing)	0,20 €
Cable TV	1,00 €
Cable TV connection fee	2,00 €

Week Offers

From 7 nights 14 % discount on all services marked with *
 From 14 nights 14 % discount on all services marked with * + breakfast on departure
 From 21 nights 20 % discount on all services marked with * + breakfast on departure

Overnight square in front of the barrier

per parking space	15,00 €
incl. all people, 6-Ampere electricity and using toilets	
Supplementary cost for use of shower is compulsory for each individual (price per person)	2,00 €
+ Shower consumption per minute (to the second billing)	0,20 €

Heide-Weeks

Discover the nature reserve Lueneburgh Heath during its most beautiful season and join us for the coronation of the Heidekönigin (Heath Queen) at the Heideblütenfest (Heath-Blossom Festival) on August 26th 2018! 7 nights for 2 adults incl. 35 kWh electricity, comfort pitch and a Heide-Surprise Package

18.08. - 02.09.2018 only 158,00 €

02.09. - 30.09.2018 only 146,00 €

Comfort pitch for caravans, camper vans or tents	9,50 €
Extra tent for children at comfort pitch (max. 2 x 2 meters)	3,00 €
Tent at tent area up to 9 m ²	7,00 €
Tent at tent area up to 20 m ²	8,00 €
Tent at tent area up to 30 m ²	9,00 €

Additional adult	7,50 €
Additional child (4 - 13 years)	4,50 €
Additional child (0 - 3 years)	free
Additional Dog	2,00 €

5 kWh electricity per night	included
Price per kWh	0,60 €
Shower per minute (to the second billing)	0,20 €
Cable TV	1,00 €
Cable TV connection fee	2,00 €

Week Offer

7 nights for 2 people incl. comfort pitch and 35 kWh	146,00 €
Additional adult	42,00 €
Additional child (4 - 13 years)	25,00 €

From 14 nights free breakfast on your day of departure!

Overnight square in front of the barrier

per parking space	15,00 €
incl. all people, 6-Ampere electricity and using toilets	
Supplementary cost for use of shower is compulsory for each individual (price per person)	2,00 €
+ Shower consumption per minute (to the second billing)	0,20 €

Package offer - Listed rates are the overnight fees for a comfort pitch and include 2 adults, and the respective ticket for the corresponding leisure facility for 2 adults.



Park Special incl.
 2-day tickets for the Heide Park Resort
 + 1-day tickets for the Weltvogelpark
 + 1-day tickets for the Serengeti-Park



incl. 2-day tickets



	7 nights	
	HS	OS
2 people	382,00 €	354,00 €
Additional adult	155,00 €	146,00 €
Additional child (3 years)	75,50 €	75,50 €
Additional child (4 - 11 years)	113,00 €	111,00 €
Additional child (12 years)	119,00 €	117,00 €
Additional child (13 years)	131,00 €	129,00 €

	3 nights		7 nights	
	HS	OS	HS	OS
2 people	188,00 €	179,00 €	279,00 €	252,00 €
Additional adult	77,00 €	75,00 €	104,00 €	95,00 €
Additional child (3 years)	49,00 €	49,00 €	49,00 €	49,00 €
Additional child (4 - 11 years)	59,00 €	59,00 €	73,00 €	71,00 €
Additional child (12 - 13 years)	66,00 €	66,00 €	79,00 €	77,00 €



incl. 1-day tickets

	3 nights		7 nights	
	HS	OS	HS	OS
2 people	118,00 €	109,00 €	209,00 €	181,00 €
Additional adult	42,00 €	40,00 €	69,00 €	60,00 €
Additional child (4 - 12 years)	27,00 €	27,00 €	41,00 €	39,00 €
Additional child (13 years)	31,00 €	31,00 €	45,00 €	43,00 €



incl. 1-day tickets

	3 nights		7 nights	
	HS	OS	HS	OS
2 people	148,00 €	139,00 €	239,00 €	211,00 €
Additional adult	57,00 €	55,00 €	84,00 €	75,00 €
Additional child (3 years)	26,50 €	26,50 €	26,50 €	26,50 €
Additional child (4 - 12 years)	39,00 €	39,00 €	53,00 €	51,00 €
Additional child (13 years)	46,00 €	46,00 €	60,00 €	58,00 €

Prices

High Season

23.03. - 08.04. / 09.05. - 23.05. / 29.06. - 02.09. / 28.09. - 21.10.

Off Season

01.01. - 23.03. / 08.04. - 09.05. / 23.05. - 29.06. / 02.09. - 28.09. / 21.10. - 31.12.

Year round and winter camping – Price quotes are valid for two people and a comfort pitch for one caravan incl. electricity supply, water connection, sewage hook-up and waste disposal. Electricity supply for 0,50 € per kWh. Optional cable-TV for 11,00 € per month.

	up to 120m ²	up to 150m ²	up to 170m ²	Add. adult	Add. child	Add. dog	extra caravan
Annual pitch (minimum stay 12 months)	900,00 €	955,00 €	1010,00 €	51,50 €	30,00 €	75,00 €	108,50 €
Winter pitch (October - March)	330,00 €	330,00 €	-	20,00 €	15,00 €	25,00 €	70,00 €

Sleep barrel – Prices are quoted per night. Sorry, no pets allowed.

Sleep barrel incl. sheets and final cleaning	27,00 € *	Sleep barrel incl. sheets and final cleaning	24,00 € *
Additional adult	8,50 € *	Additional adult	7,50 € *
Additional child (4 – 13 years)	4,50 € *	Additional child (4 – 13 years)	4,50 € *
Additional child (0 – 3 years)	free	Additional child (0 – 3 years)	free
Shower (to the second billing)	0,20 €	Shower (to the second billing)	0,20 €
Electricity	included	Electricity	included
Duvet, bedlinen and pillows incl. per person (one time fee)	8,00 €	Duvet, bedlinen and pillows incl. per person (one time fee)	8,00 €
Week Offer		Week Offer	
From 7 nights 14 % discount on all services marked with *		From 7 nights 14 % discount on all services marked with *	

3-Star guest room – Prices are quoted per night and include bed linen, towels, daily cleaning and WLAN!

Sorry, no pets allowed. Please book breakfast buffet separately.

	1 – 2 nights	from 3 nights	from 7 nights
Single room (only from November – March)	44,00 €	42,00 €	40,00 €
Double room	59,00 €	56,00 €	53,00 €
Three-bed room	73,00 €	67,00 €	64,00 €
Four-bed room	88,00 €	76,00 €	70,00 €
Extra bed in four-bed room	13,00 €	12,00 €	11,00 €
Kids under 4 years in bed of the parents for free, otherwise	5,00 €	5,00 €	5,00 €
Breakfast buffet for adults (per day)	9,40 €	9,40 €	9,40 €
Breakfast buffet for children between 4-13 years (per day)	5,10 €	5,10 €	5,10 €

Available to all guests

Mobile home – Prices are quoted per night and include bed linen, towels, final cleaning, WLAN and utilities. Sorry, no pets allowed.

2 – 3 nights incl. 4 people	103,00 €	2 – 3 nights incl. 4 people	96,00 €
4 – 6 nights incl. 4 people	97,00 €	4 – 6 nights incl. 4 people	88,00 €
7 nights or more incl. 4 people	91,00 €	7 nights or more incl. 4 people	77,00 €
Additional adult	12,00 €	Additional adult	12,00 €
Additional child (4 – 13 years)	7,00 €	Additional child (4 – 13 years)	7,00 €

Week Special

Stay 14 nights and pay for only 13!

During the winter season from 04.11.2018 – 21.12.2018

and from 02.01.2019 – 31.03.2019 a

15% discount will be granted on above mentioned prices.

3-Star holiday home – Prices are quoted per night and include bed linen, towels, final cleaning, WLAN and utilities.

Sorry, no pets allowed. Holiday homes no. 24 and 27 can be booked for up to 4 persons and holiday home no. 32 for up to 5 persons.

	HH-no. 24 + 27	HH-no. 32	HH-no. 24 + 27	HH-no. 32
2 – 3 nights	113,00 €	125,00 €	109,00 €	120,00 €
4 – 6 nights	107,00 €	119,00 €	98,00 €	109,00 €
7 nights or more	101,00 €	111,00 €	86,00 €	98,00 €

Week Special

Stay 14 nights and pay for only 13!

During the winter season from 04.11.2018 – 21.12.2018

and from 02.01.2019 – 31.03.2019 a

15% discount will be granted on above mentioned prices.

* against the recommended retail price, while stocks last.



DESIGNER OUTLET SOLTAU

BE STYLISH FOR LESS. ALWAYS.

More than 80 designer brands
30-70%* all year round.

Highway A7,
exit Soltau-Ost.
designeroutlet.soltau.com



WELT VOGEL PARK

An adventure that inspires

Right up close and in the center
in the biggest bird park of the world

www.weltvogelpark.de

Soltau Therme
In die Natur eintauchen

Spish splash waterfun for the whole family

Sole · Sauna · Wellness · Schwimmen · Fitness · Lounge

Soltau Therme · Mühlenweg 17 · 29614 Soltau · Telefon 051 91 8 44 81
info@soltau-therme.de · www.soltau-therme.de

Contact

CAMPINGPLATZ AUF DEM SIMPEL
Auf dem Simpel 1
29614 Soltau/ Wolterdingen
Tel. +49 (0)5191 3651
Fax +49 (0)5191 16095
www.auf-dem-simpel.de
info@auf-dem-simpel.de
Owner: Mark Charitonenkow

GPS:
29614 Soltau, Auf dem Simpel
53° 1'28.77" N - 9° 51'37.27" E

Opening hours:
Daily 8am – 1pm
and 3pm – 10pm (high season)
or 3pm – 8pm (off season)



Journey

The family Charitonenkow and the "Simpel-Team" are looking forward to your visit.

Some pictures copyright Lüneburger Heide GmbH